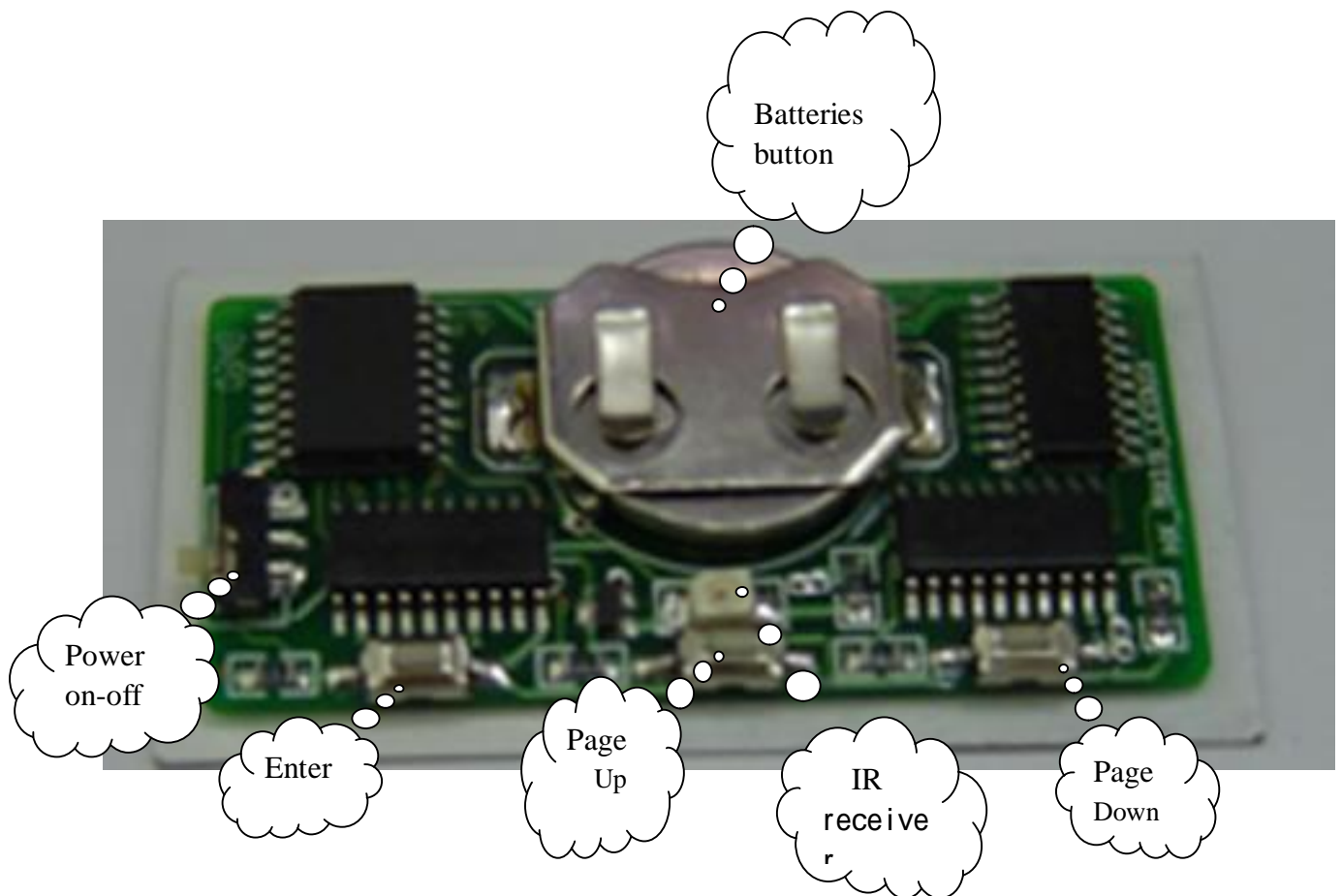


Epin User's Manual

One: The badge structure illustration:



Two : Summarization:

- 1、 This product is with power switch, insert the 3V battery into the name badge when you switch off the power(the battery seat crust is battery anode).
- 2、 The badge can stored 124 ASCII character most and display the messages circularly.
- 3.The brightness and the speed of the message can be adjusted when it is communicating.
- 4.When the light isn't enough, please change the battery.

5.The name badge have two communication ways: PC remote communication and three key-press.

Three : The key-press illustration and choice menu:

1. Input the text by three key-press: 1 is for Enter, 2 is for page Up, 3 is for page Down, can refer to the structure picture.

2.The controllable function:

n INPUT Text: Input the display text and delete all the text for inputting again.

n ADD Text: add the text

n SPEED Control: Moving-right speed control (1-9).

n LUM Control: The lum control (1-9)

2、 In the nature display, only press ENTER to start to operate the badge。 The default menu is INPUT menu。 You can change the menu by PAGE UP or PAGE DOWN as follows:



ERASE menu



ADD menu



Four : The control operation:

1、 LUM Control:

- I Enter the choice menu, by Page up or Page down for LUM display, press Enter to enter the LUM control.
- I The badge right will still display the lum value(1-9),adjust the value form 1 to 9 by Page up or Page down, the higher value for more bright. After finishing the adjust, press Enter for storing the value (The value will display on the third location)

For example: adjust LUM to 6:

First adjust to LUM menu:



LUM menu



Press ENTER, display the lum value



Adjust Page Up to 6



Press ENTER to store value 6

- I Exit: Press Page down for three seconds (when the data move left, it shows exit),the badge exit, or you don't operate it, just wait 10 seconds, it can exit automatically.



Press Page Down for 3 seconds above for exit

2、 SPEED Control:

- U Enter the choice menu, by Page up or Page down to enter SPEED menu, press the Enter to enter SPEED control.
- U The badge right will still show the current value (1-9), adjust the value between 1-9 by Page up or Page down, the more larger value for more quick speed. After finishing the adjust, press the Enter for store the value(The value will display in the three location)
- U Exit: Press the Page down for three seconds(when the data move left, it shows exit),the badge exit, or you don't operate it, just waiting 10 seconds, it can exit automatically.

For example: set up the speed 4:



Enter SPEED menu



Press ENTER to display the speed value



Press Page Down to value 4



Press again Page Down to value 4



Press Page Down for 3 seconds above to exit

3、 ERASE Text:

Enter the choice menu, by Page up or Page down to enter INPPUT menu, press Enter to delete all the text and enter TEXT INPUT state, as follows next section.

4、 ADD Text:

Enter the choice menu, by Page Up or Page Down to enter ADD 时, press ENTER, the procedure find the last two character and display two character on the left(the blank show the black) and enter INPUT text state.

Five : INPUT TEXT:

1、 Badge interface illustration:

Input the reciprocal second character	Input the reciprocal first character	Empty bit	Character for input
---------------------------------------	--------------------------------------	-----------	---------------------

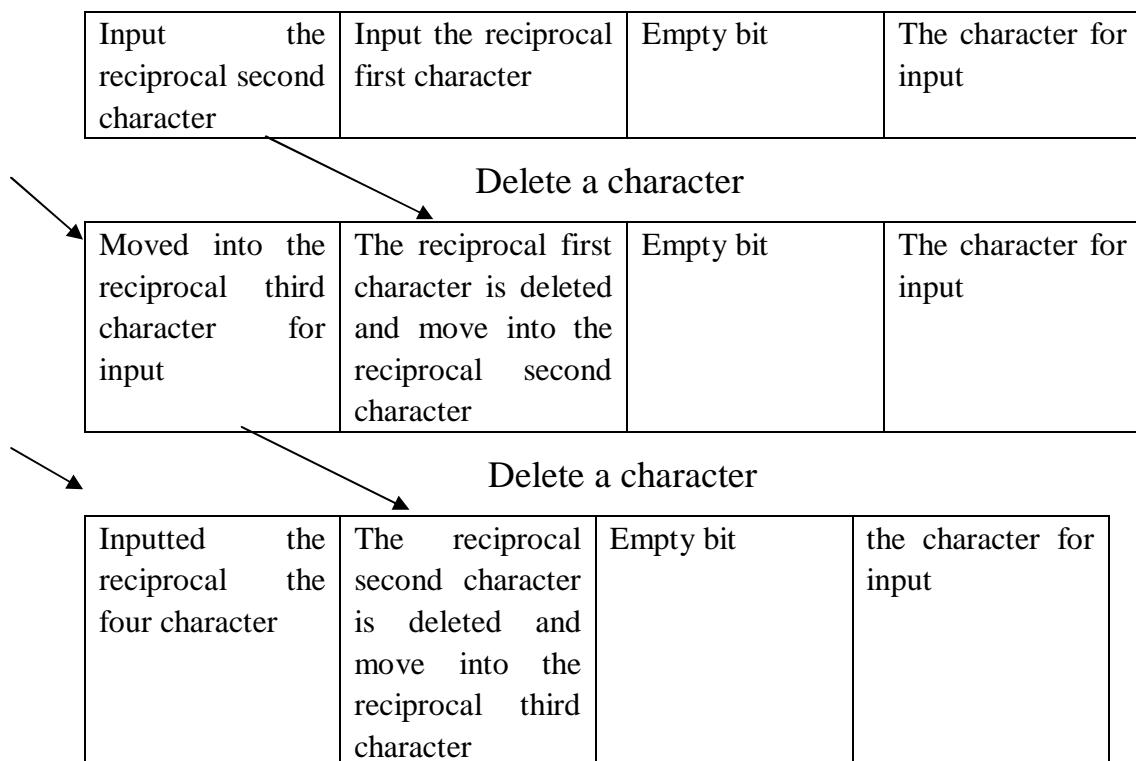
2.Character input: The character for input display in the right of the badge, the previous or the next character of it can be indicated by the Page up or Page down. When you choose one character, press ENTER and input the

character.

3.Blank press: Press ENTER for input.Input a character by press ENTER, press ENTER again for input the BLACK.(Attention: Between the two press Blank, can't press Page up or Page down),if you need input BLACK again, press ENTER again.

4.Delete a character: When you input the character wrong, press the ENTER for three seconds above, until the badge resume to still display, it shows that it has deleted the wrong character. The display information in the badge(Please visit the form).Unlock the ENTER and return the text input state.

3、



When continuously delete several character, repeat the operation procedure 4 。 5、

5. Continuously turn page: In order to input the text rapidly, the badge can sustain the scroll function: press the Page Down for three seconds above (press all through), the character will roll at the speed of 1/2 seconds. Loosen the Page Down key, stop rolling and resume to the INPUT text state.

6、 The ending symbol: When you finish the operation, it can automatically input the ending symbol.

7、 Finishing the text INPUT:

When finishing the text input, press the Page Down for three seconds above (when the data move left, it shows exit), the badge exit the control state, or you don't operate and just wait 10 seconds for exit automatically

For example: input AB A three character, between B and A have a blank
Press ENTER under INPUT state:



Enter INPPUT state, the default is A.



Press ENTER to input A



Press Page Up to B



Press ENTER to input B



Press ENTER again to input BLANK



Press Page Down to A



Press ENTER to input A.



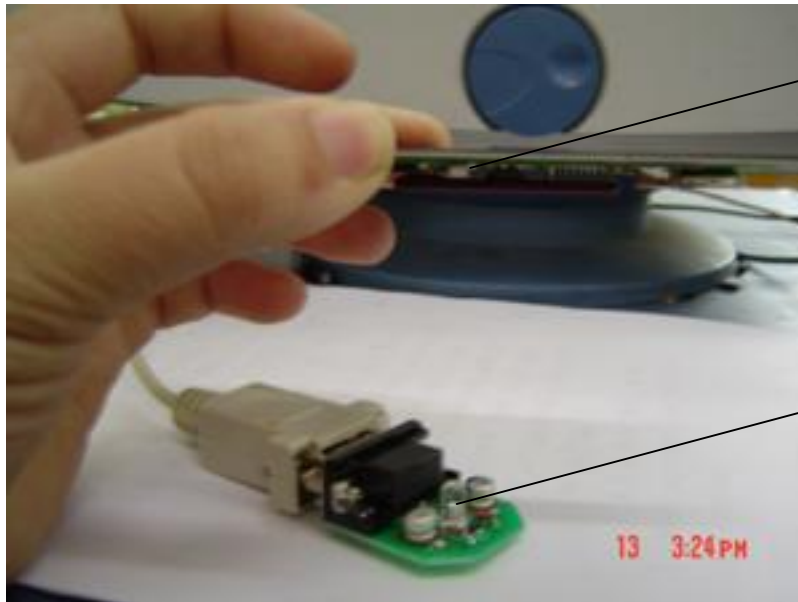
Press Page Down for 3 seconds to exit, display AB A.

SIX : Input the text by PC remote:

- 1 The communication software is SCREEN.
- 2 COM SETUP: choose communication port.
- 3 MESSAGE: input your message, note: the character is not beyond 125
- 4 BRIGHTNESS: adjust the brightness, the top is the most bright, the bottom is most dark.
- 5 SPEED: adjust the speed, the top is fastest, the bottom is slowest.
- 6 SEND: download the message to the name badge

Note: the badge is sent the messages by IR, the infrared Transmitter should be lined up with the infrared receiver: <4cm distance<10cm.

As picture:



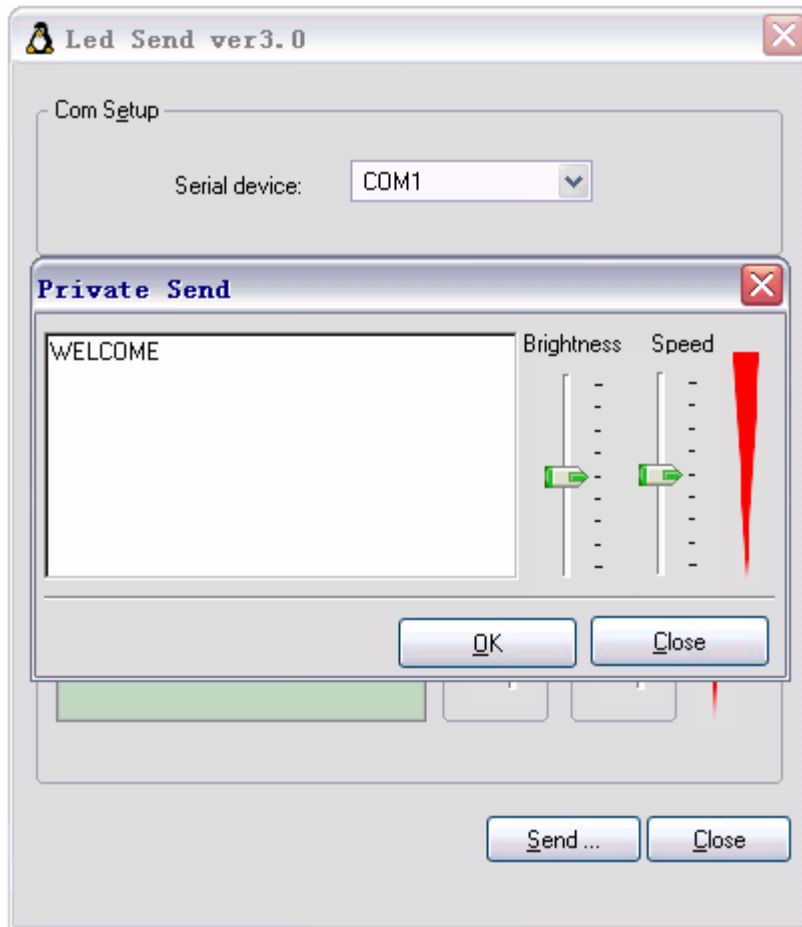
IR
receiver

IR
transmitter

Seven: Addenda

The badge have a startup message when you turn on the badge, the clients can't edit it. Input the startup information:

Open the communication software, press: CTRL+SHIFT+F3, appear the dialog box, as the picture:



If you needn't the startup message, you only input the blank character when you communicate the badge, you don't write the character into the dialogue box. The startup message will disappear when you turn on the badge later.