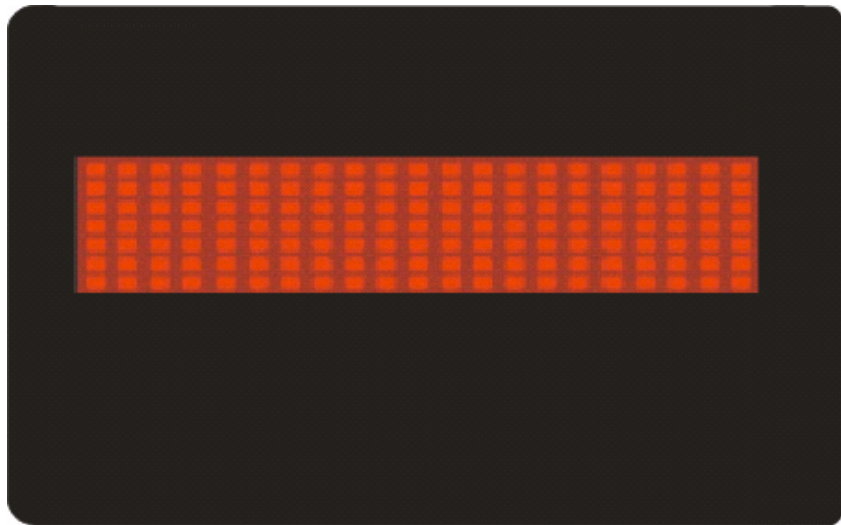


LED Name Badge 4.1

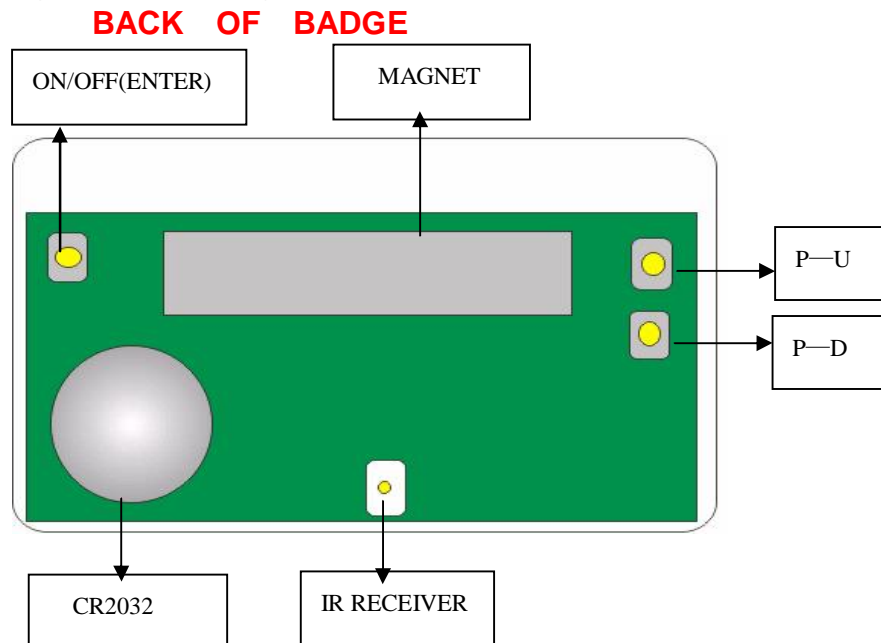


User's Manual

Summarization:

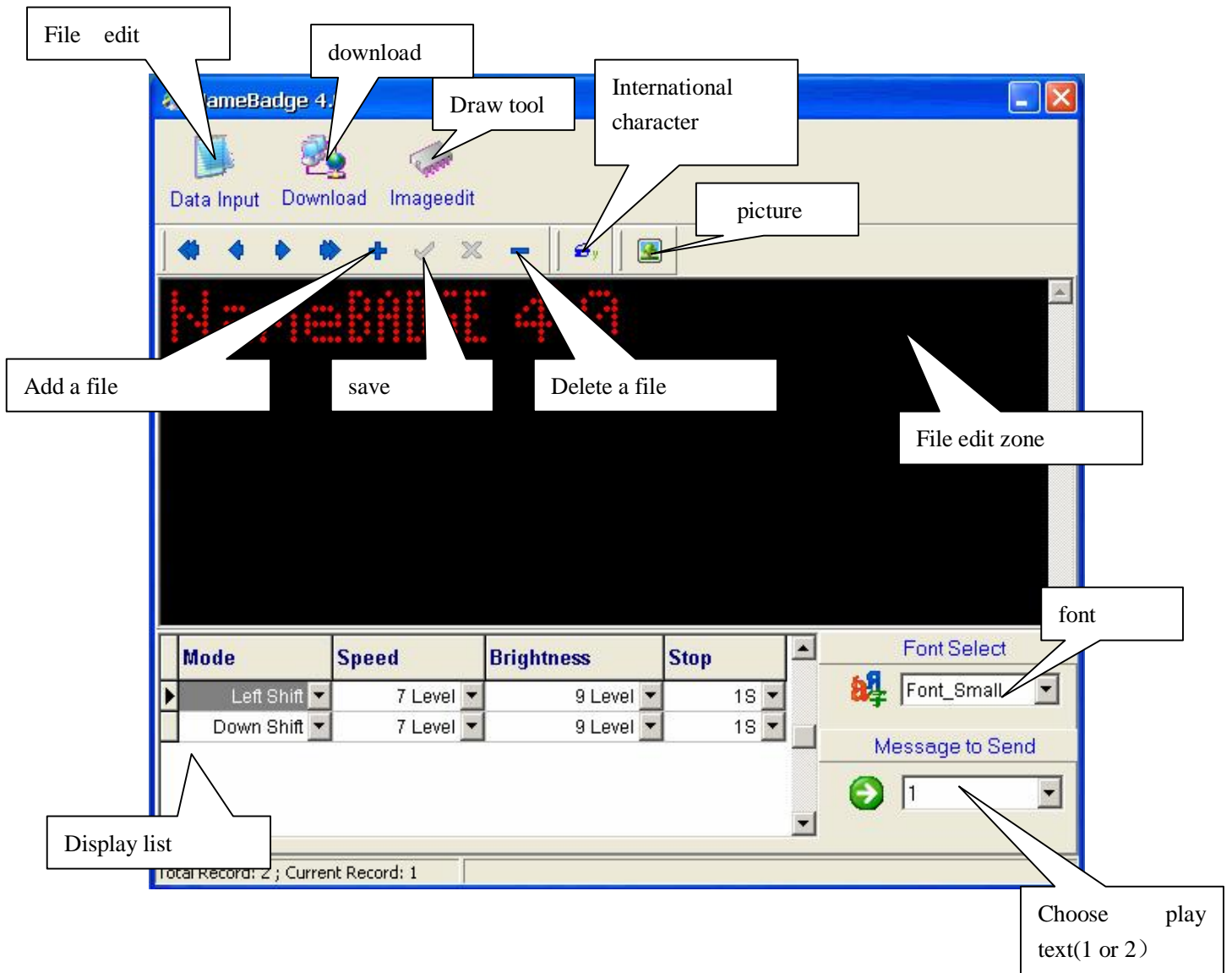
- 1、 The badge can display ASCII character, international character and picture, can store 1024 characters and 20 pictures of 7*21 dots.
- 2、 There is a startup message and can store two files at the same time, can change the display information by key-press when the display works.
- 3、 There are 9 display ways, two fonts, 9 adjustable grade for speed, brightness and stop time.
- 4、 There are 2 ways to input message: by key-press and PC communication by remote.
- 5、 The power supply is CR2032, you need change the battery if you find the brightness isn't enough or can't be communicated.
- 6、 The product structure as follows:

Notes: Page Up =P-U, Page Down=P-D



The illustration for software operation as follows:

- 1、 The software interface:



2、 Illustration:

- a) Edit the file including ASCII、 international character and picture in the editing zone, choose the display mode, speed and brightness, stop time and save.
- b) Add "+" to add a play text, repeatedly edit the file as step a).
- c) Repeatedly edit step b) to add more files(These files will be played circularly).
- d) After finish the first file, then can start to edit second file: choose 2 from the display file list, repeatedly step a),b) and c).
- e) After edit all files(one or two), click "Download" to download menu, set serial port in the menu and click "Download".

3、 Attention:

- a) There aren't over 500 characters for every file.
- b) The picture height is 7 dots, the max length is 255 dots, the total max length is 760 dots, the max picture numbers for two files are 21.
- c) Edit the picture in the draw tool, the picture size is between 7 dots height and 255 dots length with red color character and black background.
- d) You can use the small icon directly under the software installation catalogue.
- e) There is only one font for international character.
- f) The IR receiver should be aimed to IR transmitter between 3CM when you communicate to the display.

The operation of key-press:

- 1、 Illustration
 - a) Enter(ON/OFF): confirmation and switch key-press
 - b) P-U: Page up
 - c) P-D: Page down
- 2、 Switch (on/off) : Press Enter(ON/OFF), the you can turn on/off the display when the display work.
- 3、 Choose display file: Press P-U to enter menu, adjust P-U(P-D)to SWITCH state, press Enter to enter display file mode, choose display file(one or two) and press Enter to save and exit.
- 4、 Speed: Press P-U to enter menu, adjust P-U(P-D) to SPEED state, enter to set speed mode, adjust P-U(P-D) to set speed(1-9) and press Enter to save and exit.
- 5、 Brightness: Press P-U to enter menu, adjust P-U(P-D) to LUM state, press Enter to set brightness mode, adjust P-U(P-D) to set the brightness and press Enter to save and exit.
- 6、 Display mode: Press P-U to enter menu, adjust P-U(P-D) to MODE state, press Enter to set display mode(1-9), press Enter to save and exit.
- 7、 Font:: Press P-U to enter menu, adjust P-U(P-D) to FONT state and press Enter to set font mode, adjust P-U(P-D) to set font(SS3/SS7), press Enter to

save and exit.

8、 Edit text:

- a) Press P-U to enter menu, adjust P-U(P-D) to INPUT state, press Enter to edit file mode, the "A" character on the right is for input.
- b) Adjust P-U(P-D) to choose the inputted character, then press Enter to confirm.
- c) Input blank: After input a character, press Enter to input blank(can't press P-U or P-D between character and blank).
- d) Input same character: When input a character, if you need input again the same character, then press P-U or P-D to enter the character, otherwise input blank.
- e) Delete character: Press Enter for 3 seconds, the display redisplay then has deleted the character, if you need delete more characters then repeatedly operate the step.
- f) Exit text input: Press P-D for 3 seconds or wait 10 seconds to exit automatically.

9、 Attention: The key-press operation is only for the first display file.